



PARTICIPATORY BUDGETING

VOTER GUIDE



MARIN COUNTY     
Participatory Budgeting

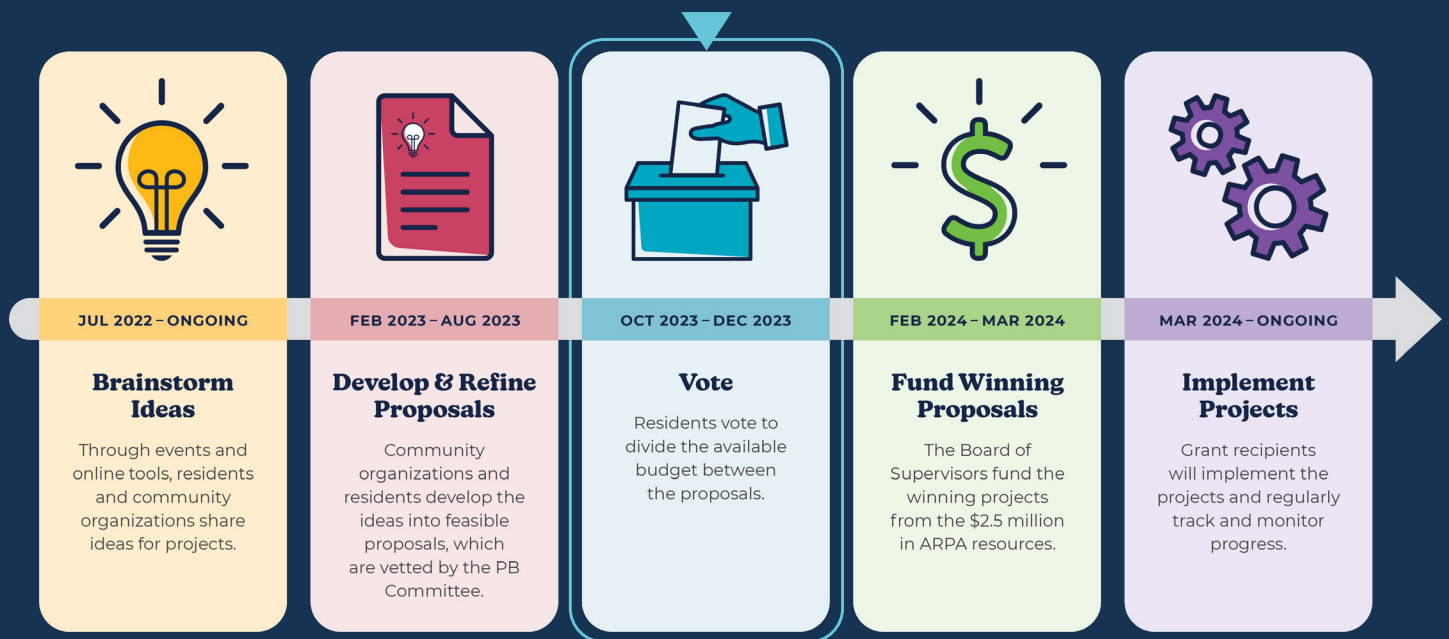
What is Participatory Budgeting?

Participatory budgeting (PB) is a democratic process in which community members decide how to spend part of a public budget. PB gives people real power to make real decisions over real money! The County of Marin is making \$2.5 million available, and YOU will decide how to spend it through participatory budgeting.

This Voter Guide will help you get to know the projects on the ballot and how to vote for your favorites!

PB TIMELINE: WHERE ARE WE IN THE PROCESS?

WE ARE HERE!



Voting Process

WHO CAN VOTE?

Anyone community member who is 14 years of age or older, and who lives, works, or attends school in Marin County can vote in Participatory Budgeting (PB). Immigration status is not required. Community members that are unhoused and/or previously incarcerated individuals can also vote.

WHAT ARE THE VOTING RULES?

- ▶ Only one ballot may be cast per person.
- ▶ You may choose up to seven (7) projects on the ballot.
- ▶ Ballots must be submitted by 5 pm on December 29, 2023 to count.

HOW DO I VOTE?

Community members can vote in the Participatory Budgeting election October 26th to December 29th at select in-person events and online. Vote online or join us at designated voting events to submit your vote in-person.

Vote Online



Use your phone's camera to scan the QR code and vote online.

Or go to: bit.ly/3ET39M3

Steps for Online PB Voting:

1. Obtain a unique voting code and register yourself. **Only one person may use each voting code.** To register with the code, you will need to enter your name, year of birth, phone number, email address and zip code.
2. Review the PB Voting Guide (available in English, Spanish and Vietnamese) to get to know the projects on the ballot and how to vote for your favorites!
3. Select the projects you would like to support. You can vote for up to 7 projects.
4. Confirm your selected projects. You can change your selections before casting your final vote.
5. Click the "Submit My Vote" button when you're ready to submit.
6. After submitting your vote, you will have the opportunity to complete a few questions about yourself. These questions are optional, but incredibly helpful to our PB efforts.

Learn more: pb.marincounty.org

Vote In-Person

The Office of Equity will host several voting events where community members can vote in-person. Below is the latest schedule of in-person voting events. **Please check our [website](#) for updates on other voting events.**



South Novato Library

931 C Street, Novato

Date: Saturday, Oct. 28, 2023

Time: 11:00am-1:00pm



Bahia Vista Elementary School (Multipurpose Room)

125 Bahia Way, San Rafael

Date: Saturday, Nov. 4, 2023*

Time: 3:00pm-5:30pm

**We will be down the street from the Dia de los Muertos event.*



San Geronimo Health Fair

Lagunitas Elementary School
6350 Sir Francis Drake Blvd,
San Geronimo

Date: Tuesday, Nov, 14, 2023

Time: 3:00pm-6:00pm

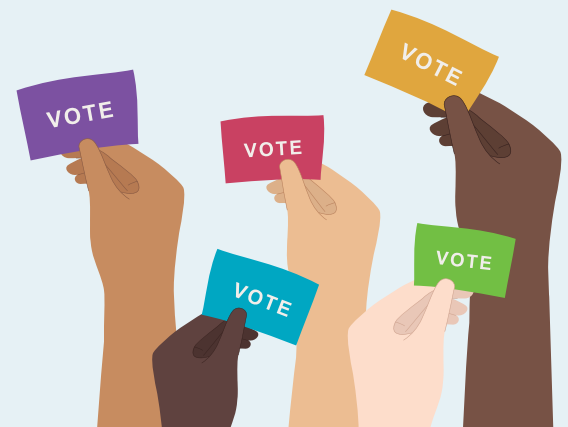


Dr. Martin Luther King Jr. Academy (Multipurpose Room)

200 Philips Drive, Sausalito

Date: Thursday, Nov. 16, 2023

Time: 5:00pm-8:00pm



How Does It Work?



1 Community members (ages 14 and older) brainstorm ideas that will address local needs, advance racial equity, and improve their communities. Ideas are collected at in-person events and [online](#).



2 Community members partner with non-profits (501c3 or 501c6) to turn ideas into proposals. There is \$2.5 million available to fund proposals and the community will vote on which projects to fund. Grants are available between \$10,000–\$250,000 for each proposal.



3 A team of grant writers are available to assist community members and non-profits with developing their proposal applications!

6 The Participatory Budgeting Committee and the Office of Equity evaluate the Stage 2 applications based on the PB scorecard.

4 Non-profits and community members submit their brief Stage 1 application.

5 Non-profits and community members submit their detailed Stage 2 application (if their Stage 1 application was approved by the Office of Equity).

THE RESULT IS A HEALTHIER AND MORE EQUITABLE MARIN COUNTY!



10 Work begins.

9 Winning proposals are announced and funded.



WE ARE HERE!



7 Selected proposals are shared with community members to review before the voting takes place.

8 Community members (ages 14 and older) vote on the proposals. Voting will take place at in-person locations and online.





How Was the Ballot Developed?

The Office of Equity received and reviewed over 100 applications. This was a highly competitive process as many of the applications were very thoughtful and represented deeply important projects for local communities. Of the applications we received, 24 projects advanced to the PB Community Ballot for voting.

Our evaluation approach was designed to ensure alignment with the Equity Goals highlighted in the PB Rulebook.

In addition, each application was carefully vetted according to the following criteria:

- ✓ Alignment with County Equity Goals and strong commitment to advancing racial equity
- ✓ Demonstrated need for the project

- ✓ Clear narrative description of the project, rooted in culturally responsive design, and connection to community-centered needs
- ✓ Project feasibility (as highlighted in the application narrative, project timeline and project budget)
- ✓ Clear articulation of project benefits and outcomes/impact
- ✓ Completion of application and supporting materials

Several important considerations informed the development of the PB Ballot, including:

- ▶ Project representation from our priority communities (e.g., Marin City, Canal, West Marin, and Novato)
- ▶ Range of project categories (e.g., Housing, Mental and Physical Health, etc.)
- ▶ Range of funding tiers (e.g., \$26,000 - \$75,000, \$126,000 - \$250,000, etc.)

As you may know, this is the first-ever Participatory Budgeting process in Marin County. The Office of Equity views the PB process as an extension of our countywide equity strategy, providing resources and a framework for community members to put their values and priorities into action.



Common Questions

HOW MUCH MONEY IS AVAILABLE?

Up to \$2,500,000 is available for the PB projects on the ballot. PB grants are available between \$10,000 - \$250,000 for each project.

WHY SHOULD I VOTE? HOW DOES MY VOTE MAKE AN IMPACT?

Your vote counts! Each vote will help us decide which projects will be funded. Make your voice heard and vote today to fund projects that will positively impact your community!

IS IMMIGRATION STATUS REQUIRED?

Immigration status is not required or asked about during this process.

HOW WILL I KNOW THE ELECTION RESULTS?

The winning projects will be announced publicly in February 2024. Please check our [website](#) for updates or sign up for our [newsletter](#).



Do you have questions about the voting process?

Please reach out by email at equity@marincounty.org or 415-473-3149.

Projects on the Ballot

The projects listed in this Voter Guide appear on the Participatory Budgeting Ballot.

End Hunger and Wasted Food



LEAD ORGANIZATION: ExtraFood
LOCATION: Countywide
PROJECT COST: \$75,000

Over 20,000 people in the County struggle with hunger, meanwhile 30% of food produced is wasted. We use innovative technology to find perfectly good food that Marin's vulnerable residents desperately need, and local businesses and schools would have thrown away, and dispatch our volunteer network to collect and distribute it to agencies serving children, families, and seniors struggling with hunger. Each year we recover 1,250 tons of food and provide 2 million+ meals for those in need.

Ancestral Healing for Women



LEAD ORGANIZATION: Our Sister's Keeper
LOCATION: Marin City
PROJECT COST: \$125,000

This project will foster advancement for women through support groups, life coaching, and access to ancestral healing spaces that address intergenerational trauma, social isolation, depression, parenting challenges, abuse, and discrimination. We will work under a framework of healing centered engagement, and we will advance racial equity by focusing on the unmet needs of economically and socially marginalized women of color in Marin City and beyond.

A Canal Culture of Excellence



LEAD ORGANIZATION: Enriching Lives Through Music
LOCATION: Canal Area
PROJECT COST: \$250,000

ELM (Enriching Lives Through Music) promotes social change through the ambitious pursuit of excellence, narrowing the equity gap for Canal neighborhood youth. We provide 3 orchestras for 175+ youth ages 8-18, multi-year tuition-free music instruction, performance opportunities, academic support, and family engagement. ELM has promoted reading proficiency for elementary age youth and college admission for high school students. We aspire to create a multi-generational, multi-cultural Center for Music, Culture, and Community.

Latino Community Health House



LEAD ORGANIZATION: Canal Alliance
LOCATION: Canal Area
PROJECT COST: \$250,000

Canal Alliance will engage community members as health outreach workers to bridge language and communication gaps for Spanish-speaking populations. Collaborating with over 100 service providers, Health House, will offer COVID-19 testing, health information, insurance assistance, behavioral health referrals, and community-based education. Health House is a safe space for preventative support and referrals, contributing to improved community health and health equity.

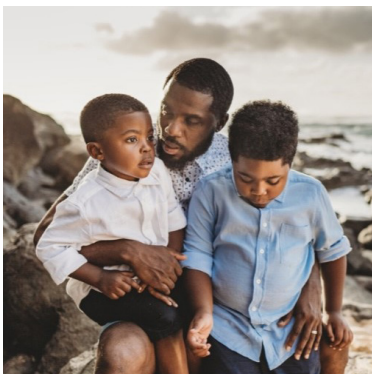
Cory's Ride



LEAD ORGANIZATION: Marin Bicycle Coalition
LOCATION: Canal Area
PROJECT COST: \$88,782

Cory's Ride is making the health & mobility benefits of cycling a basic right, not just a privilege, for Marin's youth. Participants have earned 65 bikes and safety gear and have received training, mentoring, advocacy skills, and a pathway to paid internships. Students have learned that their bike can be used for fun, connection, focus, exercise, transportation and to address climate change. Cory's Ride is rooted in the Canal neighborhood in San Rafael, and has recently expanded to Marin City.

The School to Life Project



LEAD ORGANIZATION: Marin County Cooperation Team
LOCATION: Marin City
PROJECT COST: \$71,289

The School to Life Project (STLP) interrupts the special education-to-prison pipeline through social, emotional and academic mentors for Black, neurodiverse, 3rd-5th grade children with IEP's (Individualized Education Plans) or 504 plans in the Sausalito-Marín City School District. Mentors will provide 30 minutes/week of direct mentorship and attend monthly program events. We will collect data to measure improvements in mentees' socio-emotional skills, discipline, academics, and attendance. This intersectional, assets-centered program is critical.

Brown & Black Youth Theater



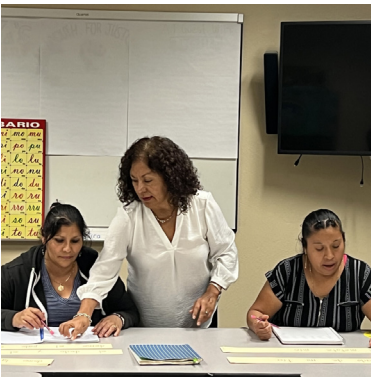
LEAD ORGANIZATION: Griot Theater Company

LOCATION: Marin City

PROJECT COST: \$250,000

Griot Theater Company is committed to creating theatrical experiences for BIPOC (Black Indigenous, People of Color) artists in Marin County. This program is a theater-focused work-based learning experience for marginalized students. Our mission is to create more equitable student outcomes through theater-making and nurture a culturally rich pipeline of brown and black artists. Founded in response to the school desegregation mandate for SMCS (Sausalito Marin City School District), we ensure that students of color have a safe place to explore their culture and artistry.

Canal Spanish Literacy Program



LEAD ORGANIZATION: Spanish Literacy Program

LOCATION: Canal Area

PROJECT COST: 125,000

The Program provides literacy and basic education to low-literate Spanish speaking adults. Participants are then able to join ESL (English as a Second Language) programs, citizenship classes, help their children in school, and obtain better jobs. Classes are held Tuesdays & Wednesdays from 6:30-8:30 PM. The Program develops knowledge of writing, reading and math, improves self esteem, builds community, develops leadership, encourage the acquisition of new knowledge and provides tools to resolve everyday life challenges.

Intern Equity Project



LEAD ORGANIZATION: Youth Transforming Justice

LOCATION: Canal Area

PROJECT COST: \$196,534

Wealthy Marin teens have access to opportunities that lead to college educations and good jobs. YTJ (Youth Transforming Justice) project will give a diverse group of low-income students meaningful paid internships that foster self-advocacy and build tangible skills to disrupt the school to prison pipeline by using peer driven, restorative, trauma responsive processes that keep peers in school and out of the juvenile justice system. These internships also improve their ability to get into college or get meaningful work.

Agentes de Cambio Resilientes *(Resilient Change Agents)*



LEAD ORGANIZATION: Espacio Comunicaciones

LOCATION: Canal Area

PROJECT COST: \$74,700

Development of personal and technical life skills, critical thinking, view of differences, such as value, creativity and innovation to solve problems; positive integration of their origins and sense of community belonging regardless of race, gender, social class, religion and different abilities. We will benefit youth and adults, immigrants, rural, urban and indigenous with training, innovation techniques, emotional health, community and cultural exchanges.

Marin City Youth Leadership



LEAD ORGANIZATION: Wise Choices

LOCATION: Marin City

PROJECT COST: \$171,204

Wise Choices works with Marin City youth to develop leadership, academic, and life skills. Middle school, high school, and young adult Youth Councils will meet regularly, learn skills, engage in community service, and conduct events for other youth. The Council meetings and events provide an opportunity to address the challenges they face and develop positive social connection. Participants will also develop advocacy skills to prepare them to participate in county-wide boards and councils.

Transportation & Equity



LEAD ORGANIZATION: West Marin Community Services

LOCATION: West Marin

PROJECT COST: \$180,625

With these funds, affordable transport & more access to programs for rural West Marin is possible, especially for youth, seniors, and families. Funds will buy an e-Van and support:

- ▶ Reduced senior isolation
- ▶ A healthier community
- ▶ After-school program transportation
- ▶ Youth & senior field trips, including summer programs
- ▶ Transportation to senior events
- ▶ Access to Latino training & community events

We will better serve our community & residents with your support!

Reentry Employment Services



LEAD ORGANIZATION: Center for Employment Opportunity

LOCATION: San Rafael

PROJECT COST: \$75,000

CEO (Center for Employment Opportunity) connects justice-impacted community members with job training and employment opportunities in Marin County. Our direct services and wraparound support help community members achieve economic mobility and multi-generational change for their families. CEO works to decrease recidivism and promote a more equitable and thriving community for all.

Creciendo Juntos *(Growing Together)*



LEAD ORGANIZATION: North Marin Community Services

LOCATION: Novato

PROJECT COST: \$250,000

Creciendo Juntos/Growing Together, a project of North Marin Community Services, will promote resiliency & equitable systems of care. We will amplify voices & learn from 800 low-income youth & adults through listening circles, storytelling, focus groups, surveys, & youth focused services. Together we will strengthen programs for the 10K people each year that we serve – with housing & family centered support, healthy food, childcare, physical & mental health care. Vote. Your Voice Matters!

Torogoz con Voz Music Academy



LEAD ORGANIZATION: Torogoz con Voz

LOCATION: Canal Area

PROJECT COST: \$100,000

Torogoz con Voz Music Academy will provide free music lessons for low-income 7–12 year old students in the San Rafael and Novato areas, which provide them with the foundations for their future development. We will promote, improve and sustain the academic level of students thru music, helping to build a community that reaches its maximum potential for social and economic development. Students that learn a musical instrument improve academic performance at school, especially in math and science.

Growing Community Wellness



LEAD ORGANIZATION: Natura Institute

LOCATION: West Marin

PROJECT COST: \$250,000

We are nurturing healing connections in our community—to each other, to nature, to our food and culture. Illness arises from social isolation, stress, lack of access to healthy food. The Commonweal Garden is a healing center for all, in nature, ensuring access to restorative, healing experiences and programs. We partner with organizations within/serving the Spanish-speaking community, those impacted by incarceration, with chronic health conditions, and frontline health and service workers.

Maternidad y Esperanza *(Motherhood and Hope)*



LEAD ORGANIZATION: Buckelew Programs

LOCATION: Canal Area

PROJECT COST: \$55,000

The program offers behavioral health and support services for Latina mothers—pregnant and with newborns—experiencing behavioral health challenges. Serving 150+ new mothers/year, our bi-cultural caseworkers also provide services/resources for their children and partners. The mothers are low-income, unstably housed and most are violence survivors suffering untreated trauma. Our program helps them overcome the cultural barriers and stigma that prevent women from gaining access to healthcare.

Newcomer Program



LEAD ORGANIZATION: Multicultural Center of Marin

LOCATION: Canal Area

PROJECT COST: \$250,000

Expand MCM's (Multicultural Center of Marin) Newcomer pilot program and create a Spanish version of the youth-driven interactive resource guide. Add enrichment activities for the Latinx newcomer middle schoolers who have undergone trauma, experienced violence in their native countries and on their immigration journey here. MCM identified a need for after school enrichment for the most at-risk youth. The Middle School Newcomer Program, a culturally tailored program, provides services and integrates youth into the community.

MC Arts Gallery-A Place to Be



LEAD ORGANIZATION: MC Arts and Culture

LOCATION: Marin City

PROJECT COST: \$250,000

What began in 2020 as a month-to-month artist pop-up grew to become a magical place to gather. Three years later, a notice to vacate transformed sad news into the bold action to pursue a long-term lease and continue our work. Your vote supports community programs that use the arts to keep youth out of the prison system and provide refuge for families affected by domestic violence. It ensures that the MC Arts Gallery continues to thrive as a place of safety, culture beauty & inspiration. Join us.

Car Seats for West Marin Kids



LEAD ORGANIZATION: West Marin Fund

LOCATION: West Marin

PROJECT COST: \$74,456

Low-income families with young children in West Marin need car seats. Car crashes are a leading cause of death for children in the U.S., and working families with young children in West Marin spend many hours driving on winding roads. Many families with limited resources frequently request assistance with car seat safety. This project would ensure at least 50 mostly BIPOC (Black, Indigenous, People of Color) children receive high quality car seats, and their parents receive training on installation and safety.

Leadership for Housing Support



LEAD ORGANIZATION: Canal Alliance

LOCATION: Canal Area

PROJECT COST: \$250,000

Leadership for Housing Support will train Spanish-speaking residents in the Canal neighborhood to provide tenant support, education, and outreach on housing rights and anti-displacement. Grassroots leaders will become experts in issues impacting over 10,000 vulnerable residents. By enhancing civic engagement, community networks, and reducing the burden on service providers, this investment in resident leadership, has the potential to benefit tenants across Marin.

Huckleberry ACE Academy



LEAD ORGANIZATION: Huckleberry Youth Program
LOCATION: Canal Area
PROJECT COST: \$250,000

ACE Academy prepares 1st generation youth for success during and after high school. We empower at-promise youth through a multi-year program that helps them develop and thrive. ACE supports overcoming barriers and achieving dreams. Programming creates successful pathways through: Academic and College Advising, Financial Aid/Scholarship Navigation, Career Exploration, Skill Development and Personal Readiness, Parent Engagement and services that encourage positive physical/emotional/mental health.

Prepare for Emergencies-PARC



LEAD ORGANIZATION: Central Marin Fire Department
LOCATION: Canal Area
PROJECT COST: \$250,000

Prepared and Resilient Communities (PARC) engages under-resourced and low-income communities through a neighbor-helping-neighbor emergency preparedness framework. The PARC initiative offers community resiliency by recognizing the needs of the community and providing childcare, a meal, and preferred language training. The comprehensive two-hour class focuses on disaster awareness, creating Go Bags, and signing up for emergency alerts. Upon completion, participants receive a \$50 gift card.

Building Parent Power in Marin



LEAD ORGANIZATION: Parent Voices
LOCATION: Marin City
PROJECT COST: \$170,950

Deep-seated racial inequity in Marin will never be dismantled until communities of color that have historically been excluded from decision-making processes build power to win and maintain changes. By hosting focus groups and political education trainings and workshops, Parent Voices hopes to activate parent political power in Marin City, particularly BIPOC (Black Indigenous People of Color) families; and ensure parents have a seat at the table when decisions are being made that impact their families and their communities.

MARIN COUNTY 

Participatory Budgeting

If you have questions, please contact the Marin County Office of Equity at
(415) 473-3149 or via email at equity@marincounty.org.

To learn more, visit our website at
www.equity.marincounty.org